

NEWAGE

Measuring Your Flooring

Design Services Measurement Guide

Before Your Design Consultation

Provide us with the measurements of your space and a sketch of your floor plan, so our team of design experts can create the perfect flooring solution for you.



Measure your space

We will walk you through the in-and-outs of how to measure your space properly, with diagrams, checklists and helpful tips to look out for.



Provide measurements

Fill out the provided measurement form with your measurements and send it back to us so we can get started with your layout.



Sketch your floor plan

Help us visualize your space by providing us with a rough sketch of your floorplan. This will help our team visualize your measurements.

Why do we need your measurements?

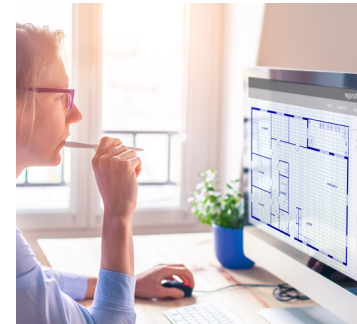
Many projects have been derailed by a slight miscalculation in measuring. By taking accurate measurements, we will be able to maximize full-use of your space by designing flooring solutions for your needs, and suited to your space.



Things to keep in mind while measuring your space

Not every home is built the same, and not every space will have the same use.

Below are some helpful tips to keep in mind while measuring your space. The more thorough you are with your measurements, the more precise our design team can get to creating your perfect space.



What we do for you

Create an accurate floor plan of your space

After you provide us with all of your measurements, our design experts will create a spatially accurate floor plan of your exact space. This will allow our team to visually layout which flooring solution is best suited for you and your space.

Select products based on your needs

Having an accurate floor plan of your area now allows us to confidently suggest different combinations and sizes of flooring and accessories to fit your specific needs. We offer many different flooring solutions and we want to ensure you are getting the most use out of your space.

Account for technical challenges and limitations

Not all rooms in the home are built the same, we can help work around any technical challenges and limitations you may have within your space.

This could include, but not limited to:

- High foot traffic areas
- Sunlight exposure
- Flooring accessories
- Flooring for stair ways
- Flooring orientation
- Installation under existing cabinetry



Find the best options and understand your needs

The first step to know the flooring you need is to gather the information like foot traffic, sunlight, and wear and tear that your flooring will endure. For example, the garage is where you need to most durable flooring. High traffic areas are the entryways to the house, garage, as well as those leading to the rooms. If there are kids and pets in the house, the family room will be one of the busiest areas.

Measure and calculate square footage

For each section of the room, you need to measure the width and length. In rectangular areas, you can calculate square footage by multiplying these measurements. If your room includes several squares or rectangles, multiply the length by the width for each one and add the resulting numbers to get the total square footage of the room.

Account for your waste factor

You should add a certain percentage to your order to account for waste. If you're planning on a DIY flooring installation, you should include a waste factor of at least 5%, but typically 10% to 15% for cutting and wastage. This will give you extra flooring to properly accommodate corners or angles. The final calculation that includes your room's square footage and waste factor will let you know how much flooring to order.

Feel the quality through samples

Try ordering our **Flooring Sample Kit** or **Flooring Sample Individuals** through our site. Feel the thickness and the textures for our Planks and Tiles. Put them on the ground and test them out with socks or bare feet to make the right choice for your space. Put your flooring samples near a window in the room you want to decorate. Examine how different natural lighting conditions, and color temperatures of home lighting, affect the look of your flooring.

Acclimate your flooring

Before you install our luxury vinyl Plank or Tile flooring, it is recommended that you get your flooring delivered in advance and let it sit in the room for one to three days. That way the planks or tiles will be acclimated to the moisture and temperature of the room.

Forgot to book a consultation?

No need to worry, here's how you can contact us for a FREE consultation with one of our award-winning Design Experts.

Call us or visit our website



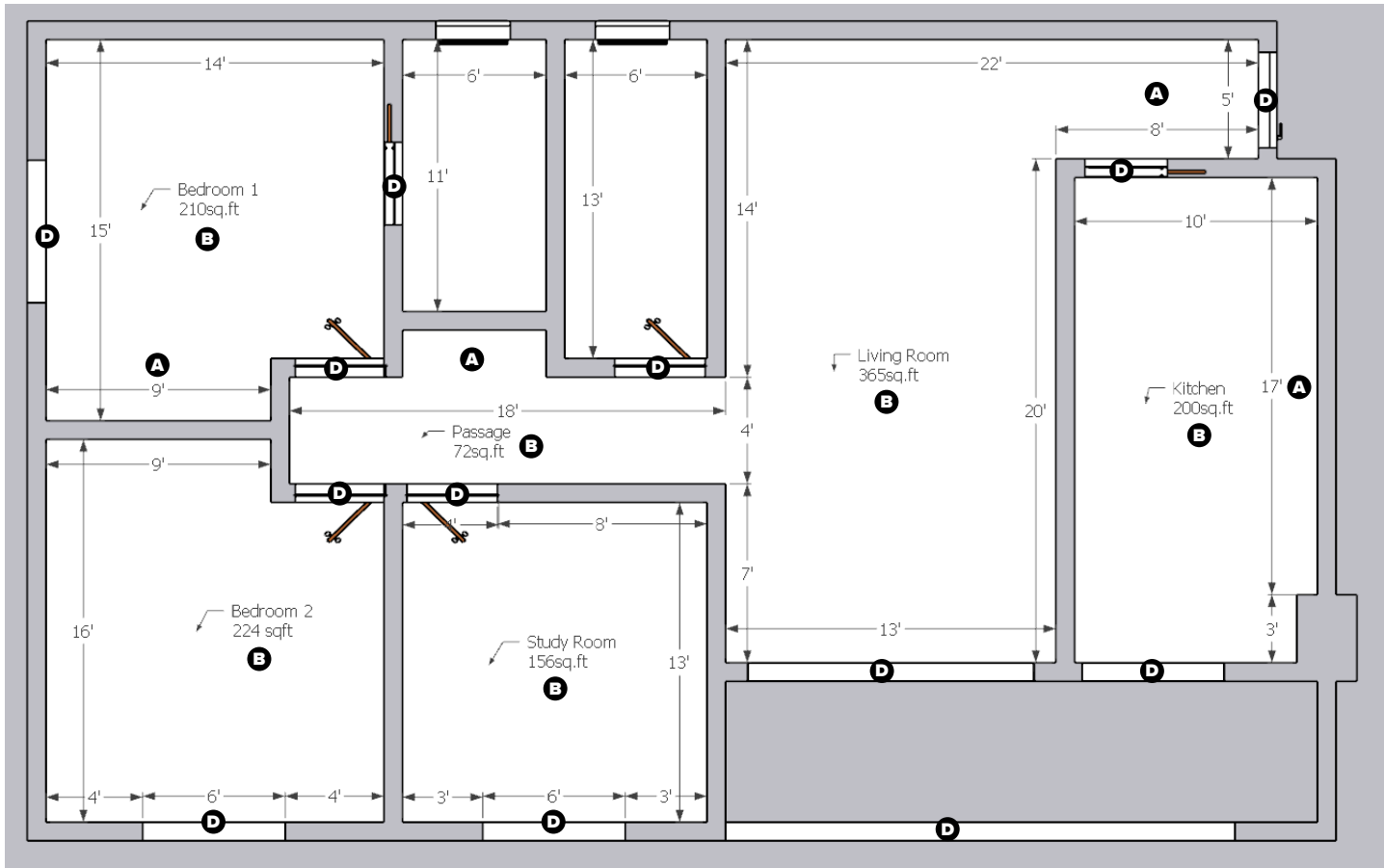
1.877.306.8930



[newageproducts.com/design-services](https://www.newageproducts.com/design-services)

How to measure your space

Don't fret if you have never done this before, we have provided a list and a form to help you record all your measurements for our design team.



What to measure list

A. Determine the shape and layout of the room

For simple rectangular rooms, measure the long wall and short wall, and multiply the linear feet to approximate the square footage of flooring needed. For irregular shaped rooms, divide the space into segments where you can multiply the length by width and add each segment together. You might find it easier to sketch a floor plan onto graph paper and add your measurements there.

B. Measure and calculate square footage

For each section of the room, you need to measure the width and length. In rectangular areas, you can calculate square footage by multiplying these measurements. If your room includes several squares or rectangles, multiply the length by the width for each one and add the resulting numbers to get the total square footage of the room.

C. Account for your waste factor

You should add a certain percentage to your order to account for waste. If you're planning on a DIY flooring installation, you should include a waste factor of at least 5%, but typically 10% to 15% for cutting and wastage. This will give you extra flooring to properly accommodate corners or angles. The final calculation that includes your room's square footage and waste factor will let you know how much flooring to order.

D. Measurements for any windows, stair ways, door openings, or garage doors

E. Note if floors are level in the room, for each room being updated with new flooring

If floor is not level, will require special quoting to be able to level before installing new flooring.

F. Note if baseboards are being used in room

Baseboards will have to be removed prior to installation and will likely not be reusable after installation (the baseboard may crack or chip during removal). This will also assist our designers when considering using Aluminum Endcaps during install.

G. Note if radiant heating systems are being used underneath flooring

H. Note if cabinetry exists in the room already

Typically, flooring gets installed underneath cabinetry during a renovation to ensure highest quality finish. In the event that cabinetry is not being replaced, installers may need to remove toe kicks on cabinetry to get access to the flooring underneath the cabinets.

Record your measurements

Using the diagram and list on your left (page 4), record all your measurements below. Once filled-out, please send this form back to us before your consultation.

Room 1 Dimensions

Refer to sections A. through D. on the "What to measure list".

Width Length Additional measurements For any irregular shaped rooms, or windows, stairs, and doors.

Waste Factor

Room 2 Dimensions

Refer to sections A. through D. on the "What to measure list".

Width Length Additional measurements For any irregular shaped rooms, or windows, stairs, and doors.

Waste Factor

Room 3 Dimensions

Refer to sections A. through D. on the "What to measure list".

Width Length Additional measurements For any irregular shaped rooms, or windows, stairs, and doors.

Waste Factor

Room 4 Dimensions

Refer to sections A. through D. on the "What to measure list".

Width Length Additional measurements For any irregular shaped rooms, or windows, stairs, and doors.

Waste Factor

Record your measurements (cont.)

Once filled-out, please send this form back to us before your consultation.

Room 5 Dimensions

Refer to sections A. through D. on the "What to measure list".

Width Length Additional measurements For any irregular shaped rooms, or windows, stairs, and doors.

Waste Factor

Room 6 Dimensions

Refer to sections A. through D. on the "What to measure list".

Width Length Additional measurements For any irregular shaped rooms, or windows, stairs, and doors.

Waste Factor

Room 7 Dimensions

Refer to sections A. through D. on the "What to measure list".

Width Length Additional measurements For any irregular shaped rooms, or windows, stairs, and doors.

Waste Factor

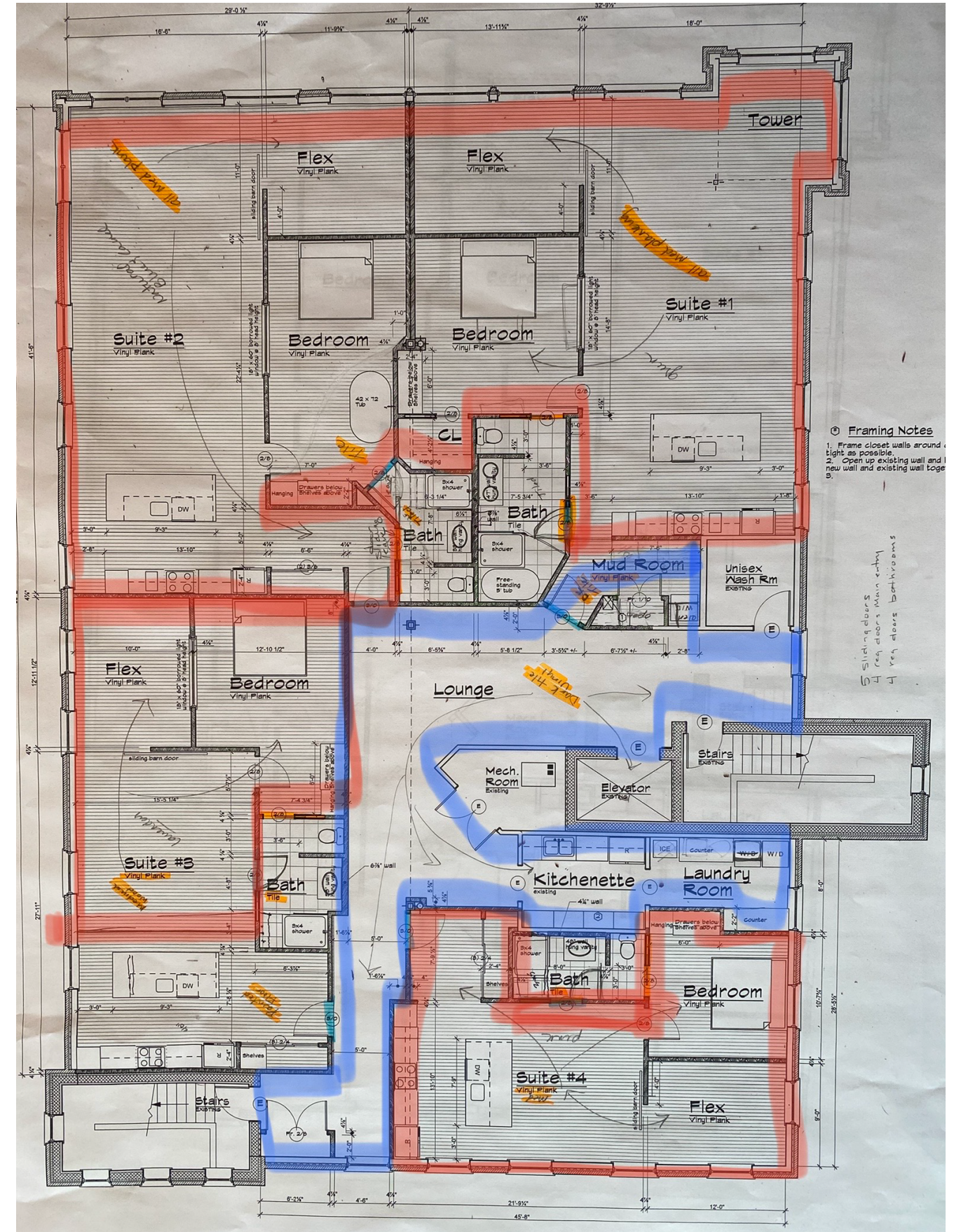
Final Calculations

Room 1 - Square Footage + Waste Factor **Room 2** - Square Footage + Waste Factor **Room 3** - Square Footage + Waste Factor

Room 4 - Square Footage + Waste Factor **Room 5** - Square Footage + Waste Factor **Room 6** - Square Footage + Waste Factor

Room 7 - Square Footage + Waste Factor Additional comments Refer to sections E. through H. on the "What to measure list".

Example of customer sketch



Send us your measurements

1. Attach a photo, or scan of the sketch of your space, with measurements.
2. Send us your sketch and measurements to our design team [here](#) or email us at info@newageproducts.com.

In your email, please specify your Full Name and your Date and Time of your design consultation.

Have photos of your space?

All is welcome! Take any pictures you may have of your space and send them to our design team with your Measurement Form and Sketch of your layout. This will help our team visualize your space more thoroughly prior to your consultation.



NEWAGE
PRODUCTS INC.